

APEX 2019

9 - 12 SEPTEMBER 2019

LOS ANGELES CONVENTION CENTER - SOUTH HALL - LOS ANGELES, CALIFORNIA

REVISION
Date: 8/14/2019
By: KIMBERLEY BUCKLEY

BOOTH COUNT

APEX as of 08/14/2019

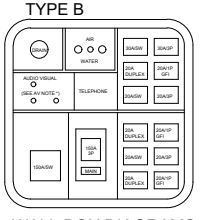
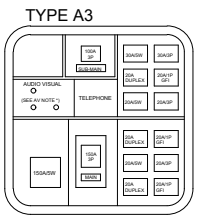
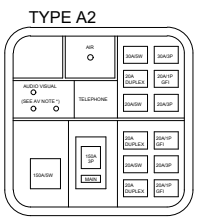
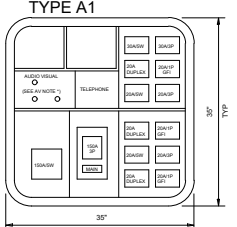
84% - 4,767 m² Rented
16% - 882 m² Available

Dimension	Size	Qty	m ²	Rented	Available
15x15	150	2	260	2	0
15x15	225	2	450	2	0
15x17	255	1	255	1	0
24x27	648	1	648	1	0
2x3	6	183	1,098	36	147
2x4	12	14	168	14	0
3x3	9	7	63	7	0
3x4	12	15	108	15	0
3x6	18	15	108	15	0
3x9	27	4	108	4	0
4x12	48	1	48	1	0
4x6	24	4	96	4	0
4x9	36	2	72	2	0
6x10	60	1	60	1	0
6x12	72	6	432	6	0
6x13	78	1	78	1	0
6x15	90	1	90	1	0
6x6	36	15	540	15	0
6x9	54	5	270	5	0
9x11	99	1	99	1	0
9x15	135	2	270	2	0
Custom	15	1	15	1	0
Custom	21	1	21	1	0
Custom	30	1	30	1	0
Totals:				280	133

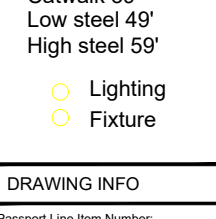
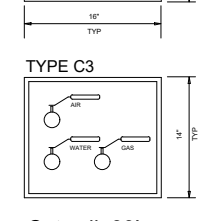
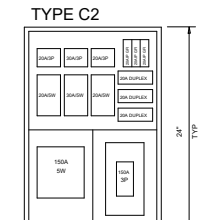
Booths Rented - 4,767 m²
 Booths Available - 882 m²

BLDG. LEGEND:

Utility Box Diagrams



WALL BOX DIAGRAMS
NOTE: WB = WALL BOX



Catwalk 39'
Low steel 49'
High steel 59'

Lighting
 Fixture

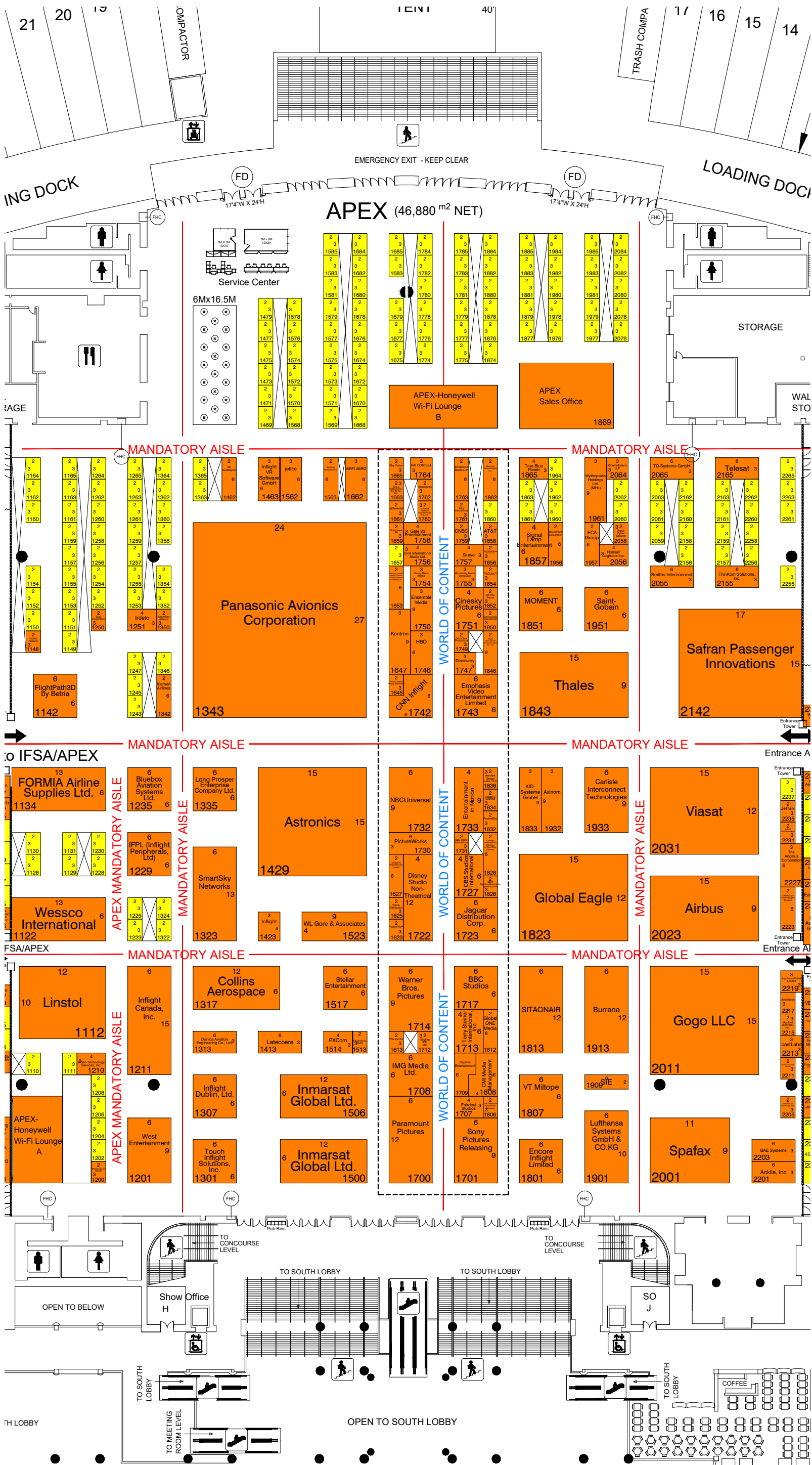
DRAWING INFO

Passport Line Item Number:
#4591009
Facility:
LOS ANGELES CONVENTION CENTER
Hall / Level:
SOUTH HALL
City & State:
LOS ANGELES, CALIFORNIA
Scale:
CUSTOM
Job #: 458001
AE: RHONDA PRATT
Prod. AE: PRODUCING EXEC
Started: 8/14/2019
Started By: KIMBERLEY BUCKLEY
Prod. Branch: ANAHEIM

FREEMAN

Disclaimer - Every effort has been made to ensure the accuracy of all information contained on this floor plan. However, no warranties, either expressed or implied, are made with respect to this floor plan. If the location of building columns, utilities or other architectural components of the facility is a consideration in the construction or usage of an exhibit, it is the sole responsibility of the exhibitor to physically inspect the facility to verify all dimension and locations.
© Copyright 2007, Freeman Co. All rights reserved.

Confidential and Proprietary - the information contained herein is the proprietary information of Freeman and by accessing the information, the recipient agrees to keep the information confidential and not disclose it to any third party without the prior consent of Freeman. Recipient also agrees to only use the information for its internal evaluation purposes and for no other purpose, without the prior consent of Freeman.



File Path: P:\Anaheim\Branch\WRCDC_Floor Plans\Shows\Shows 2019\09 September\APEX-AIX-IFA 2019 (458001)\APEX-AIX-IFA 09.19.dwg | Tab Name: APEX Exhibits R-A L4951009.FP